

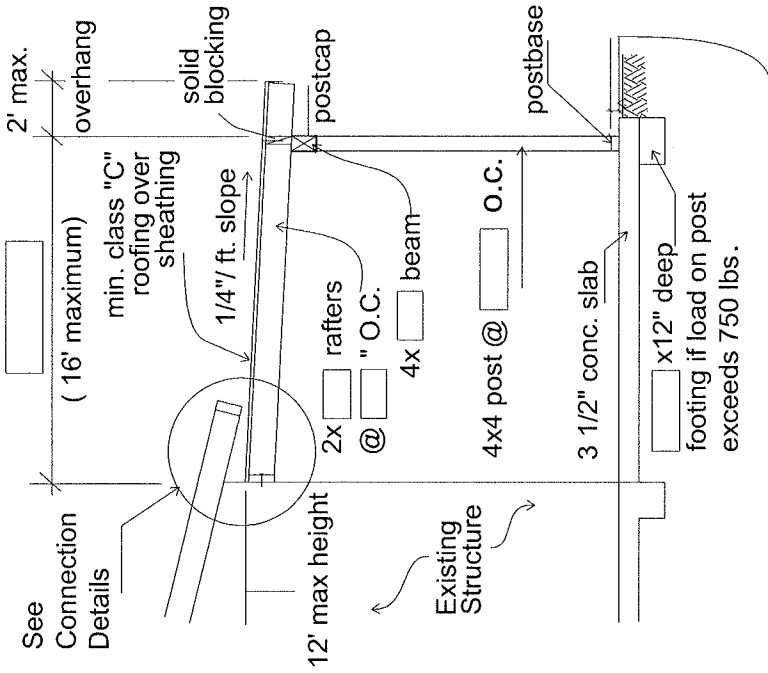
# RESIDENTIAL PATIO COVERS

A building permit is required to construct a patio cover. Please bring two (2) copies of the following to the building department when applying for a building permit:

1. On a separate sheet, draw a plot plan showing the location of the patio cover in relation to the house. Include the overall dimensions of the patio cover as well as the dimensions to adjacent structures, property lines, pools, and septic systems.
2. On this sheet, fill in the blanks where indicated by a box. ( ) Any deviation from the plans shall be clearly indicated and approved by the building department. Patio covers at elevations over 3500 feet are subject to snow loads and may differ from this plan. The building department permit technician can assist you if necessary.

3. For additional wall covering and opening requirements refer to Appendix I of the California Building Code.

4. This design does not provide for future conversion to habitable space.

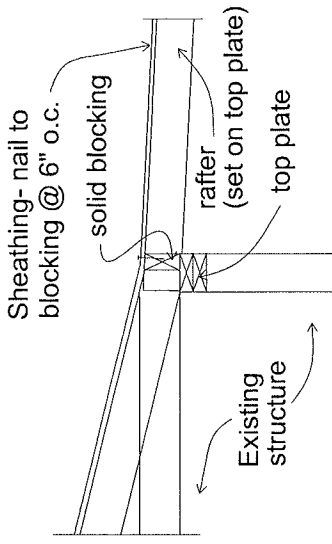


1" min. separation between wood and concrete

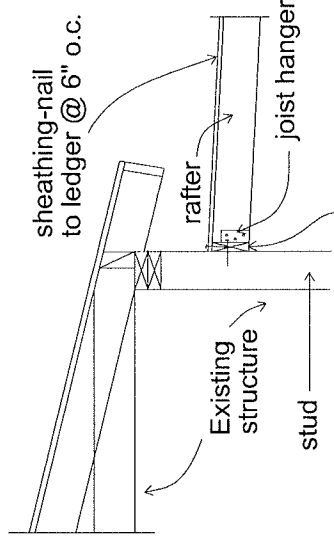
LL = 10psf; DL = 10psf; DF-L #2

RAFTER SIZE	SPACING	MAX. SPAN
2x6	12"	16'-0"
	16"	15'-5"
	24"	13'-6"
2x8	24"	16'-0"

BEAM SIZE	MAX. SPAN
4X6	6'
4X8	8'
4X10	10'
4X12	12'

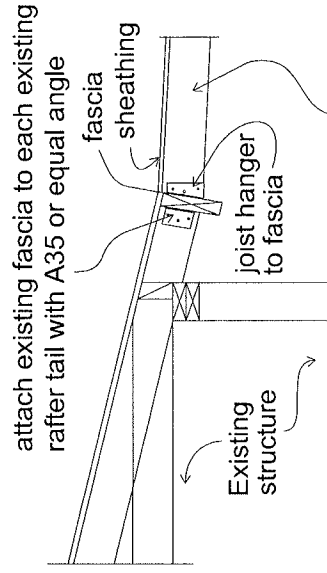


## BEARING CONNECTION



2x ledger at least as deep as rafters. 2-SDS 1/4 screws (or equal) or 3/8" x 5" lag bolt @ 16" o.c. each stud

## LEDGER CONNECTION



rafter - max. 10' span from fascia if using this connection detail

## FASCIA CONNECTION

(fascia shall be minimum 2X)